

EL-MT01M PV Module Micro-Crack Inspector



Vary Customizing Functions:

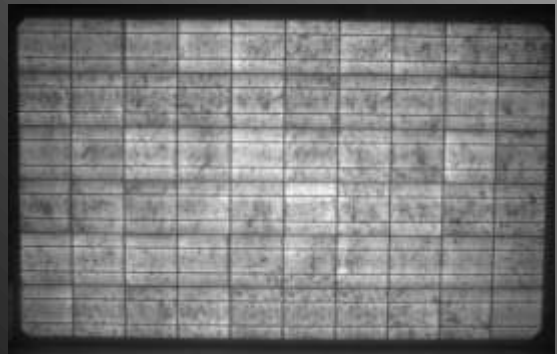
- Possibility to upgrade to in-line model
- Possibility to upgrade to Dual Camera
- Customize size from 1.7 x1 to 2.3x 1.3m
- Software controlled I/V input
- High speed imaging time
- Auto fine tune EL image
- Auto calculate % of dark area
- Auto mark dark area in red
- Arrow mark and save to file
- Support Bar-code system database
- Save your comment to file



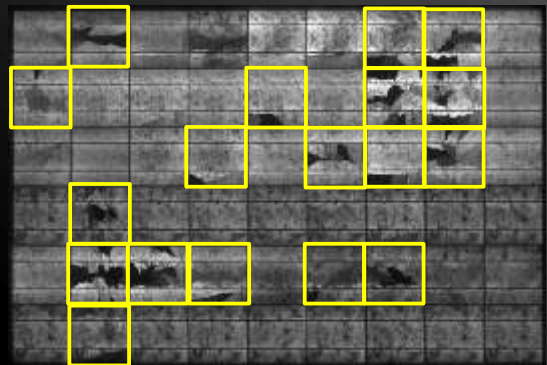
Doc No.: CCEL-MT01M
Rev.04



An EL image sample of good PV module



An EL image sample of defect PV module



欽揚科技股份有限公司
Chinup Technology Co., Ltd.

台南市安南區科技五路23號
NO.23 Keji 5th Rd. An Nan Dist.,
Tainan, 709 Taiwan . (Tainan
Technology Industrial Park)

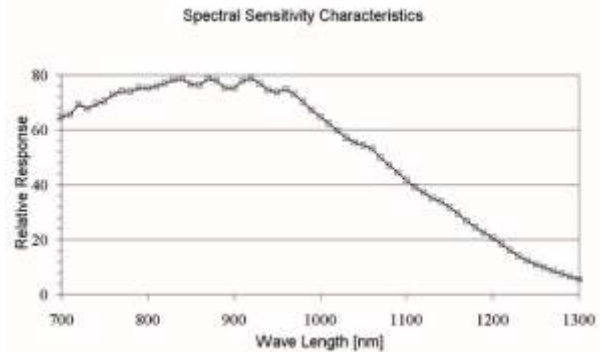
Website: <http://www.chinup.com.tw>
Tel: +886-6-5105858 Fax: +886-6-3842653

EL-MT01M

PV Module & String Micro-Crack Inspector

Camera Features

- 2/3-inch CCD camera
- Resolution of up to 1.3 Mega Pixels
- Camera-link interface with 480Mb/s throughput
- Built for tough industrial environments
- FPGA-based camera DSP/controller
- Class 100 clean-room assembly
- Cooling system inside
- Included filter lens included



System Specification

We are listening your voice and customize each machine to meet your engineering requirements. Please contact with us for further details.

Product Name	EL-MT01M	Hardware/	EL Camera x1
Application	Off-line PV module quality inspection	Mechnaical	Customerized lens and filter lens x1
Type	Manual input , output	Components	DC power supply x1
Max Test Area	1700 x 1100 ~ 2000 x 1300 mm		PC system x1 (with 22" Full HD LCD)
Max resolution	1640 x 1130 pixels		Machine body x1
Dimension	Around 2.1 (L) x 1.4 (D) x 1.0 (H) m		Contact parts for Cell Strong x1
Weight	Around 135Kg	Software	Contact parts for PV module x1
Power	Around 110V/ 3A		Standard UI & EL appliaction software

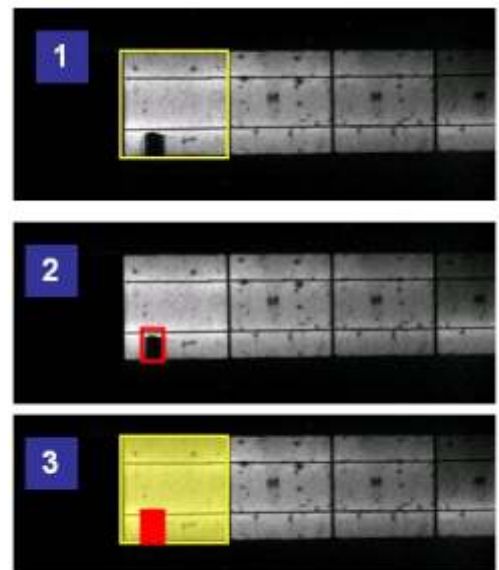
System Application

Application of in-line/ off-line PV Module Inspection :

The EL Inspector can be used to inspect and ensure no crack problem inside the PV module after the string tabbing, rework and lamination process.



Contact with us!



➔ Possible Max Lose= 4.37%

Chinup Technology Co., Ltd..

Add.: NO.23 Keji 5th Rd. An Nan Dist., Tainan, 709 Taiwan (Tainan Technology Industrial Park)

Tel:+886-6-5105858 Fax:+886-6-3842653

Http://www.chinup.com.tw E-mail: mail@mail.chinup.com.tw